

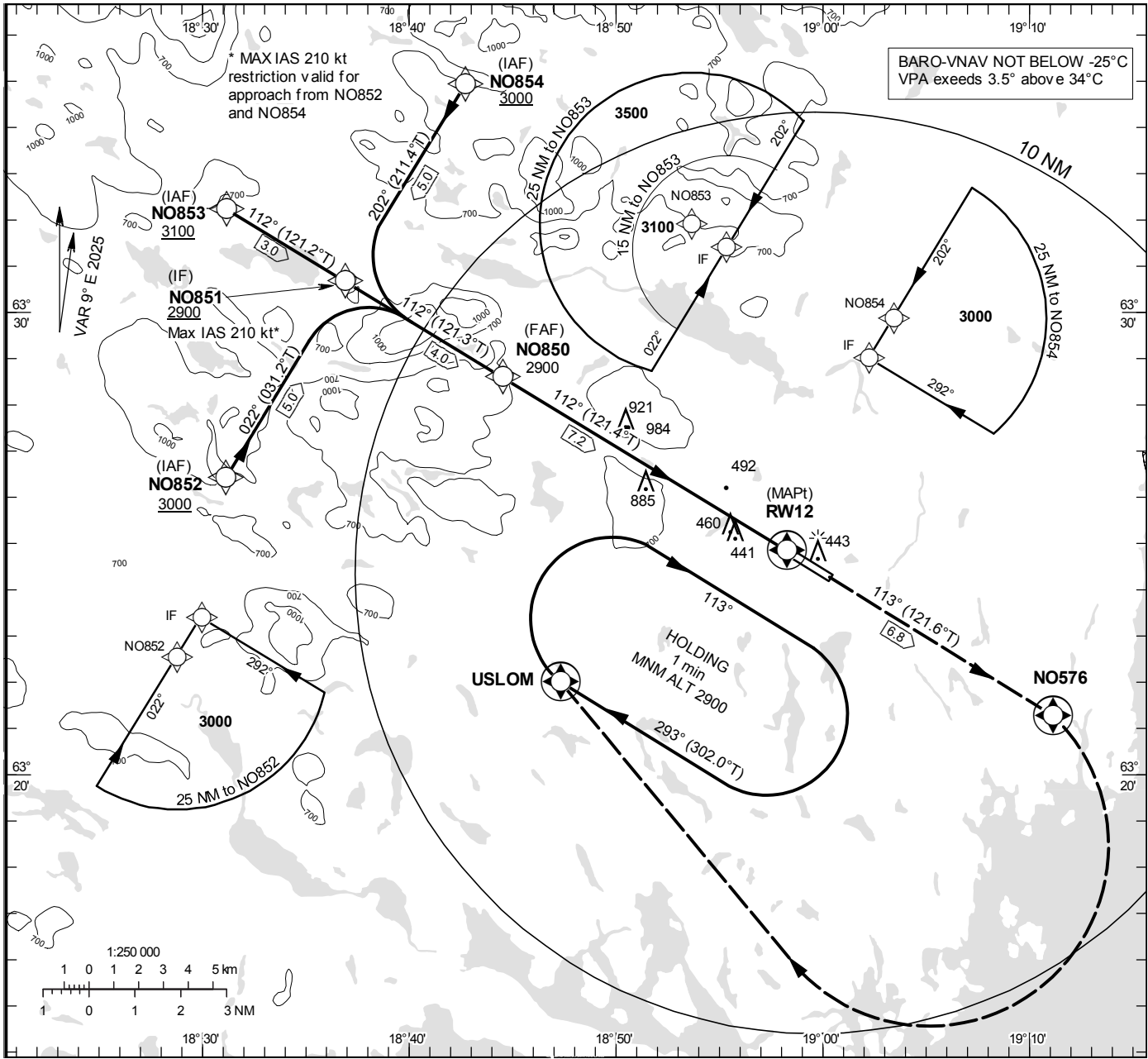
ÖRNSKÖLDSVIK
RNP RWY 12

INSTRUMENT
APPROACH
CHART – ICAO

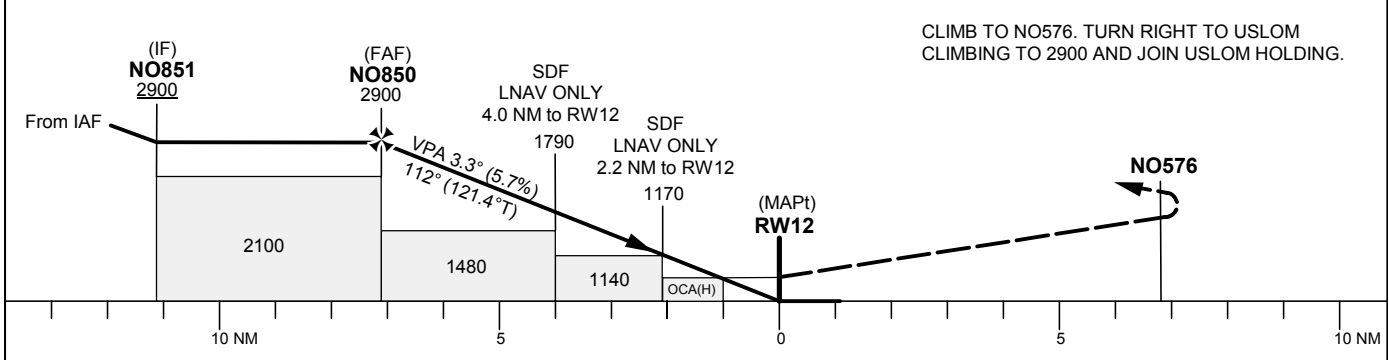
THR ELEV 354.1 ft, AD ELEV 355 ft
OCH are related to THR.
BRG are MAG (True).
ALT, HGT and ELEV in ft.

ÖVIK TOWER 122.255

EGNOS CH 57185 E 12A



TA 5000 ft AMSL RDH 50 ft



OCA (H)					Final approach		Distance FAF-MAPt 7.2 NM						
Cat of ACFT	A	B	C	D	Dist to RWY 12		7	6	5	4	3	2	1
LPV	577 (223)	589 (235)	597 (243)	607 (253)	ALT		2820	2470	2130	1780	1440	1090	750
LNAV/VNAV	575 (221)	587 (233)	595 (241)	607 (253)	GS		kt	80	100	120	140	160	180
LNAV	740 (390)				Rate of descent		ft/min	460	575	690	805	920	1035

CHANGE: Editorial.

ÖRNSKÖLDSVIK

RNP RWY 12 via IAF NO852

Path Desc	Waypoint Identifier	Fly-over	Course °M(°T)	Dist (NM)	Turn Dir	Altitude	Speed	VPA/ RDH	Rec Navaid	Navigation Specification
IF	NO852	-	-	-	-	+3000	-	-	-	RNP APCH
TF	NO851	-	022°(031.2°)	5.0	-	+2900	-210	-	-	RNP APCH

RNP RWY 12 via IAF NO853

Path Desc	Waypoint Identifier	Fly-over	Course °M(°T)	Dist (NM)	Turn Dir	Altitude	Speed	VPA/ RDH	Rec Navaid	Navigation Specification
IF	NO853	-	-	-	-	+3100	-	-	-	RNP APCH
TF	NO851	-	112°(121.2°)	3.0	-	+2900	-	-	-	RNP APCH

RNP RWY 12 via IAF NO854

Path Desc	Waypoint Identifier	Fly-over	Course °M(°T)	Dist (NM)	Turn Dir	Altitude	Speed	VPA/ RDH	Rec Navaid	Navigation Specification
IF	NO854	-	-	-	-	+3000	-	-	-	RNP APCH
TF	NO851	-	202°(211.4°)	5.0	-	+2900	-210	-	-	RNP APCH

Path Desc	Waypoint Identifier	Fly-over	Course °M(°T)	Dist (NM)	Turn Dir	Altitude	Speed	VPA/ RDH	Rec Navaid	Navigation Specification
IF	NO851	-	-	-	-	+2900	-	-	-	RNP APCH
TF	NO850	-	112°(121.3)	4.0	-	+2900	-	-	-	RNP APCH
TF	RW12	Y	112°(121.4°)	7.2	-	@404	-	-3.25/50		RNP APCH
TF	NO576	Y	113°(121.6°)	6.8	-	-	-	-	-	RNP APCH
DF	USLOM	Y	-	-	R	+2900	-	-	-	RNP APCH

Path Desc	Waypoint Identifier	Fly-over	Course °M(°T)	Dist (NM)	Turn Dir	Altitude	Speed	VPA/ RDH	Rec Navaid	Navigation Specification
HM	USLOM	Y	293°(302.0°)	-	R	+2900	-	-	-	RNAV 1

FAS Data Block

RNP RWY 12

Input data

Operation Type	0
SBAS Provider	1 (EGNOS)
Airport Identifier	ESNO
Runway	12
Runway Letter	0 (None)
Approach Performance Designator	0
Route Indicator	
Reference Path Data Selector	0
Reference Path Identifier	E12A
LTP/FTP Latitude	632450.3645N
LTP/FTP Longitude	0185815.7960E
LTP/FTP Ellipsoidal Height (metres)	131.6
FPAP Latitude	632416.2490N
Delta FPAP Latitude (seconds)	-34.1155
FPAP Longitude	0190019.4825E
Delta FPAP Longitude (seconds)	123.6865
Threshold Crossing Height	50.0
TCH Units Selector	0 (feet)
Glidepath Angle (degrees)	3.25
Course Width (metres)	105.00
Length Offset (metres)	0
HAL (metres)	40.0
VAL (metres)	50.0

Output data

Data Block	10 0F 0E 13 05 0C 00 00 01 32 31 05 79 DE 36 1B E8 38 24 08 24 19 79 F5 FE 4D C6 03 F4 01 45 01 64 00 C8 FA DB 46 F7 DE
Calculated CRC Value	DB46F7DE

Required Additional Data

ICAO Code	ES
LTP/FTP Orthometric Height (metres)	107.9